

OPEN *invitation*

Extending a warm welcome to frequent guests, whatever the season, this sun-drenched home is the ultimate entertainer.

STORY *Chris Pearson* | STYLING *Claire Delmar* | PHOTOGRAPHY *Anson Smart*



ATRIUM Pendant lights, Volker Haug Studio. Sculpture by Lionel Smit, and artwork by Suzanna Vangelov, both .M Contemporary. Side table, Rachel Donath. Stairs, Havwoods. **EXTERIOR** Breeze blocks, MD Brick. Paving and stone cladding, Eco Outdoor. Louvres, Maxim Louvres.

After a blissful – and stylish – holiday in Palm Springs in the US, which celebrates Modernism at its most relaxed, the owners of this house in Sydney’s Eastern Suburbs, wanted to relive those moments in their new home. So in 2019, Michael and Sharôn asked the architects at CM Studio to create this breezy, light-filled showpiece. “Palm Springs exudes an effortless aesthetic,” says Michael. “Simple and pared-back, but also warm and inviting, nostalgic and retro but also very comfortable.”

And, with its white facade, flat roof, horizontal lines, breeze blocks, crazy paving and palms, this haven skilfully evokes the Mid-century holiday homes of Hollywood A-listers, but with a contemporary twist.

The couple bought the wedge-shaped property for their growing family, with two energetic boys, Jonah, now 15, and Aiden, 13, and Rose, 10, who arrived in 2012. At the time the site was occupied by a single-storey Mid-century home, which the couple loved. But a leaky roof, plumbing problems and a lack of space signalled its demise. They wanted more light and space, and a swimming pool, says Michael. So they hired Megan Burns of CM Studio and brought in the bulldozer. ▶

THE PALETTE

Dulux Whisper White
(exterior walls)

Dogal Light Grey honed marble
(benchtops and splashback)

Dulux Natural White
(interior walls)

KITCHEN/DINING Joinery in American oak veneer and Dulux Natural White, Saltwater Joinery. Benchtops and splashback in Dogal Grey marble, Surface Gallery. Pendant light, Volker Haug Studio. Rogerseller tapware, and Serax barstools, all Winning Appliances. Table, Joel Elliott Furniture. Chairs, Thonet. Vases by Ricca Okano. *Tidal Marks*, *River Landscape* vase by Kate Dorrough, Arthouse Gallery. Bowl, Provider Store. Vessel, HK Edit. **LIVING** Zanotta leather chair, Cult. Sofa and armchair, both Jordan. Side tables, Marlo Lyda. Moon jar by Belinda Fox and Neville French, Arthouse Gallery. Rug, Armadillo.

Paint colours are reproduced as accurately as printing processes allow.



THIS IS THE LIFE

The home is perfectly suited to a family who loves to entertain but also enjoys quieter moments. The children can retreat to the downstairs rumpus or their bedrooms, while Michael and Sharón can enjoy a lavishly equipped main suite. "We included a balcony there, so we can sit with a bird's eye view of the kids while they are playing in the yard but not be on top of them," says Michael.



POOL AREA Landscaping by The Garden Social. 'Double Square' breeze block wall, MD Brick. **GARDEN TERRACE** Outdoor dining table, Coco Republic. 'Palissade' dining chairs and outdoor armchair, Hay. 'Trace' outdoor coffee table and sofa, Tait. 'Murray Rose' outdoor shower, Robert Plumb. 'Endicott' crazy paving, Eco Outdoor. **OPPOSITE DINING** Pendant light, Volker Haug Studio. Serax 'Nello' bar stools, Winning Appliances. Dining table, Joel Elliott Furniture. Dining chairs, Thonet. **LIVING** Zanotta leather chair, Cult. Sofa, Jardan.





The brief? As they are keen entertainers, it called for indoor-outdoor spaces to accommodate up to 20 people at one time. “We wanted the space for us all to have friends dropping in with ease,” says Michael. “But with a parents’ retreat, decent bedrooms for the kids with their own ensuites, and with private nooks, so we are not on top of each other. It also had to retain the essence of the old house - an oasis in a secluded garden.”

“The site was not expansive, so we needed to be smart, with a terrace where they could entertain year-round, with heating and fans, according to the season,” says Megan. And exuding Palm Springs’ cool elegance, with white taking a starring role.

Mirroring the site, the house is wedge-shaped, with a broad, sleek facade with privacy screens along the top floor. Visitors step into a lofty two-storey void with views out to the lush back garden. To one side, is the children’s rumpus, while on the other is a study-cum-guest bedroom. Meanwhile, to the left of the stairwell is a huge open plan, connected seamlessly to the backyard through a wall of sliders. The open stairs lead to four bedrooms, including the generous main suite, and the two boys’ bedrooms with a shared ensuite. Motorised aluminium screens ensure the three street-facing rooms enjoy maximum privacy.

The relaxed materials palette includes stacked-stone walls, polished concrete floors, limewashed-oak joinery and floors, crazy paving on the patio and a marble kitchen benchtop teamed with a fluted fascia, “which the light hits beautifully, adding interest and texture,” says Megan. Meanwhile, curves expressed in the joinery and an oculus in the entry, offset an otherwise angular building. While white walls were chosen “to recede”, she says, in contrast, the powder room features “a pop of blue - Michael and Sharôn wanted a bit of fun”. Brushed bronze hardware, door and window frames complete the soft look.

The furniture selection was a collaboration between Megan and Michael and Sharôn, including contemporary pieces, many with a retro nostalgia in keeping with the Palm Springs inspiration. “There’s a beautiful layering of tonal, natural materials with jewel tones, such as the teal velvet bedhead - a reference to a New York hotel they had stayed in,” says Megan, echoed by the armchair in the living room.

Michael’s favourite space? “All the spaces are light-filled with an effortless cosiness, beautifully modernised to suit our needs.” And, with their own happy holiday as their muse, it’s as if they could be vacationing year round. ▶

CM Studio: cm-studio.com.au. **BAU Group:** baugroup.com.au.

The Garden Social: thegardensocial.com.au.

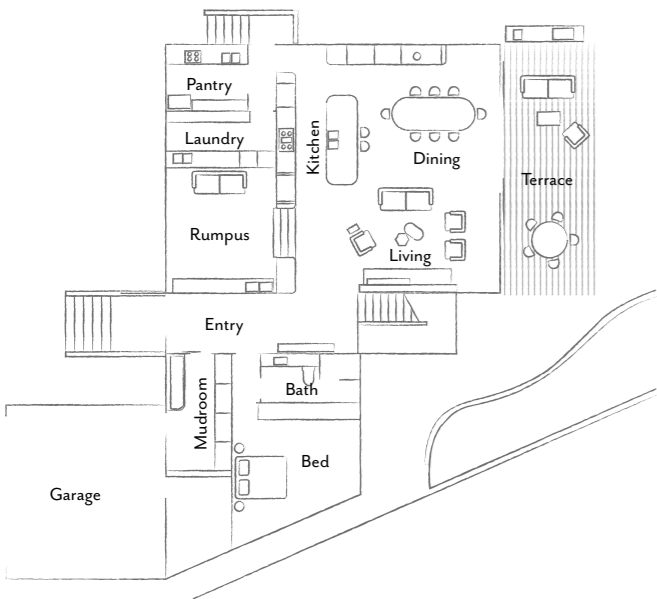
“Entertaining family and friends is huge for us. We wanted the space to have friends dropping in with ease.” MICHAEL, OWNER



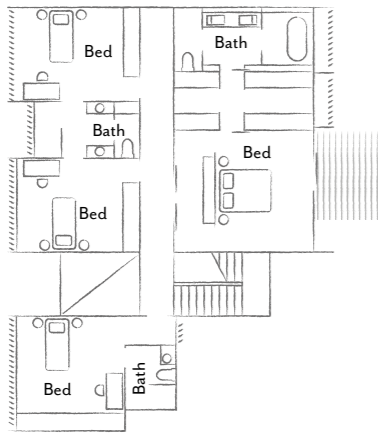
KITCHEN Joinery in American oak veneer and Dulux Natural White, Saltwater Joinery. Benchtops and splashback in Dogal Grey marble, Surface Gallery. Rogerseller tapware and Serax stools, all Winning Appliances. Vase by Ricca Okano. Large vase by Kate Dorrough. **POOL** Sun loungers, Tait. Bath towel, Oliver Thom. Paving, Eco Outdoor. **LIVING** Gubi lamp and Zanotta chairs, all Cult. Sofa, Jardan. *The Gathering* artwork by Richard Whadcock. *Moon Jar XI* by Belinda Fox & Neville French.

THE LAYOUT

Ground floor



First floor



LIVING Zanotta leather chairs and Gubi floor lamp, all Cult. 'Lola' sofa and 'Leeroy' velvet armchair, both Jordan. Pojat coffee table, Great Dane. Marble side tables, Marlo Lyda. *The Gathering* artwork by Richard Whadcock, Studio Gallery Group. Stringbark poles by Milminyina Dhamarrandji, .M Contemporary. Rug, Armadillo. **TERRACE** Landscaping by The Garden Social. Sofa, Tait. Chairs, Hay. Table, Coco Republic.



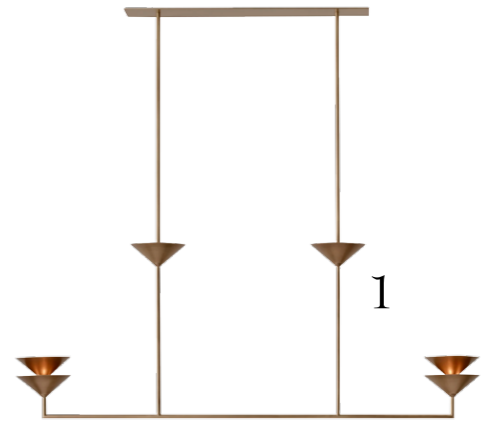
“There’s a beautiful layering of tonal materials with jewel tones, such as the velvet bedhead – a reference to a New York hotel.” MEGAN BURNS, DESIGN DIRECTOR



MAIN BEDROOM Custom bedhead, Saltwater Joinery. Wall light, Volker Haug Studio. Artwork by Hayden Jackson, Studio Gallery. Bed linen, Cultiver. ‘Millenium’ carpet, Prestige Carpets. Ceramics, owner’s existing. **ENSUITE** Moda ‘Teresa’ bath, ACS Designer Bathrooms. Rogerseller ‘Eccentric’ tapware, Winning Appliances. Louvres, Maxim Louvres. Dogal Grey marble tiles, Surface Gallery.



Clockwise from top left
LIVING Wall and joinery painted Dulux Natural White, Saltwater Joinery. Maison de Vacances cushions, Polite Society. **DINING** Pendant light, Volker Haug Studio. Table, Joel Elliott Furniture. Chairs, Thonet. Antique bowl, Provider Store. Cylindrical vessel, HK Edit. Vase by Ricca Okano. **PATIO** Landscaping by The Garden Social. 'Double Square' breeze block wall, MD Brick. 'Endicott' crazy paving, Eco Outdoor. Sun loungers, Tait. **ENTRY** 'Finch' stone cladding, Eco Outdoor.



THE SOURCE

Bring neutral to new levels of sophisticated luxe with elegant fabrics, forms and timeless design.



Produced by Andrea Healy.

1 'Pyramid Scheme Balanced Stack' linear **chandelier**, POA, Volker Haug Studio. 2 Zanotta 'Maggiolina' **lounge chair**, from \$13,100, Cult. 3 'Pearle' **rug** in Marigold (400x300cm), \$4090, Tribe Home. 4 *Untitled 30 artwork* by Hayden Jackson, \$2700, Studio Gallery Group. 5 'Pyramid Scheme Baby Wall Swing' **wall light**, POA, Volker Haug Studio. 6 Gubi 'Timberline' **floor lamp**, \$1180, Cult. 7 Madras Link 'Tamsin' **vase** in Clay, \$69.95, Myer. 8 TON **chair** '811' by Josef Hoffmann, from \$744, James Richardson Furniture. 9 'Niah' **coffee table**, \$1299, Freedom. 10 'Lola' two-and-a-half seater **sofa**, from \$5552, Jardan. **H&G**